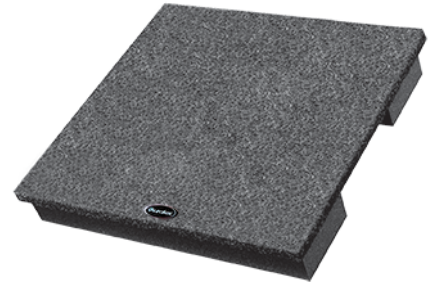


SubDude™

Subwoofer Floatation Device

Benefits:

- Made of 1/2" MDF covered with black ozite and supported by two Platfoam runners surrounding a Studiofoam center strip
- Decouples sound source from the floor, resulting in greater audibility and clarity
- Helps improve sound transmission loss
- *Tighten* and increase sonic detail of your source. Hear more clarity and consistency of low frequencies and effects
- Lightweight, portable riser with convenient handle pre-installed
- One standard size fits most speaker configurations



Applications:

- Live sound and residential theater subwoofers, under stage monitors, under DJ turntables, under guitar amps and bass amps
- Great for Recording Studios, Residential Theaters, Houses of Worship, and club gigs

Size:

- Decking: 15" x 15" x 1/2"
- Platfoam: 4" x 15" x 2"

Box Information:

- (1) SubDudes per box, (4) SubDudes per Master Carton

Installation:

- Place one or more SubDudes under your speaker cabinets.

Accessory Products:

- Platfoam
- MoPADs
- Acoustical Systems
- Platfoam Isolation Sheets

Weight Limitations:

- Max weight of 300 lbs.