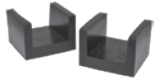


Auralex® Sound Isolation Products

Creating an isolated environment by eliminating unwanted sound traveling either in or out of a specific space, is typically achieved through the use of a multi-layered construction approach (see Fig 1). Auralex offers several specialized sound isolation products, such as **SheetBlok Sound Barrier** and **RC-8 Resilient Channel**, that can be used to add mass, airspace and varying layers to your existing structure, or better yet, to create a complete 'room within a room'. These materials, coupled with the proper installation techniques, can reduce or eliminate the majority of your sound isolation problems.

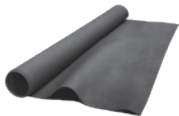
U-Boats™ Floor Floaters



Made of a long-lasting EPDM rubber, **U-Boats** are our proprietary u-shaped channels used to support framing members and float (i.e., isolate and decouple) them from the surrounding structure. With the help of **U-Boats**, a floated room features greatly improved transmission loss (isolation) and low-frequency definition.

It's easy to calculate how many **U-Boats** you'll need; simply multiply the total square footage of the area you want to float by two-thirds. The resulting number gives you the approximate number of **U-Boats** required, spaced 16" apart. This formula covers the majority of standard applications. For more specific information on this as it pertains to your exact floor, please feel free to contact us.

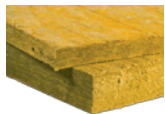
SheetBlok™/SheetBlok Plus™



SheetBlok/SheetBlok-Plus is a specialized dense, limp-mass vinyl material that is about 6dB more effective than solid lead of the same thickness at stopping the transmission of sound. **SheetBlok** and **SheetBlok-Plus** act as a thin, dense sound barrier layer in walls, ceilings or floors.

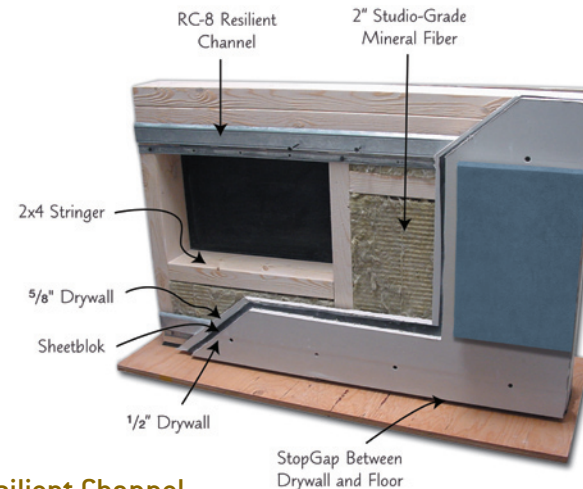
SheetBlok and **SheetBlok-Plus** are most effective when used as a component of a multi-layered construction scheme. For ease of installation (especially for ceiling applications) we suggest **SheetBlok-Plus** which is the same dense, limp-mass material as **SheetBlok**, but comes with a pressure-sensitive adhesive which temporarily holds the **SheetBlok** in place while you apply the next layer (drywall, etc.) of your construction scheme.

Mineral Fiber Insulation - MFI



The best way to tighten up a room's sound and make it more soundproof in the process is to design it right, build it tight and make the partitions as dense as possible. That's where **Auralex Mineral Fiber Insulation (MFI)** comes in. **Mineral Fiber Insulation** is much more dense than standard insulation. It's specifically designed for acoustical usage and yields better bass trapping, overall absorption, thermal characteristics, moisture absorption and isolation than any other product on the market.

Fig 1:



RC-8™ Resilient Channel



RC-8 is a specially-formed, sturdy metal device that, when used to hang drywall (instead of attaching the drywall directly to the studs and/or joists), greatly reduces the sound transmission of the wall or ceiling system and improves the sound of the room.

RC-8 should be installed horizontally at the top and bottom of your wall and then every 2' or less in between. This distance should be shortened to 18" for ceiling applications. RC-8 can support one layer of 5/8" drywall, **SheetBlok**, and one layer of 1/2" drywall.

StopGap™



StopGap Acoustical Sealant is a highly elastic, water-based sealant used for reducing sound transmission at the perimeter of wall systems or around electrical box cutouts to achieve specified STC/MTC values. StopGap comes in a large, 29 oz caulking tube and therefore requires a larger than normal-sized caulking gun, which can be purchased at any local hardware store. Coverage per 29 oz. cartridge is approximately 40 linear feet with a 3/8 inch bead applied.

Sound Isolation Products

Additional Construction Resources?

For additional construction advice, visit our website at www.Acoustics101.com. There you can find answers to technical questions and examples of floor, wall and ceiling construction techniques.

Or you can simply fill out the enclosed **Personalized Room Analysis Form** with as much detail as possible, and let an **Auralex Application Specialist** help you figure out exactly what your room needs.

