



# HoverDeck™ Product Brief

Marketing Tools for Auralex Manufacturer's Reps

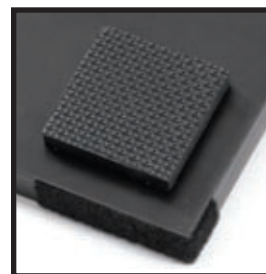
## Problem Statement:

The stage or drum riser sympathetically vibrates (*resonates*) with the drums and/or PA system. These resonances feed back to the drums, which is then being picked up by the mics. The best way to stop this action—things resonating—is to add mass, which either changes the resonant frequency or dampens it altogether, or to **decouple** the resonant items.

The **Auralex HoverDeck** is specifically engineered to reduce coloration from floor resonance by decoupling the drum kit, resulting in a "tighter", more "pure" sound for both studio and FOH.

## Benefits:

- Made of laminated 5/8" MDF, faced with strips of non-skid tape and supported by specially-formulated, vibration-isolating rubber pucks.
- Decouples drums/percussion instruments from the floor, resulting in greater audibility and clarity.
- "Tighten" the punch of the kick drum, toms immediately sound like "new heads", and more "air" in the cymbals.
- The specifically-engineered components combined with the modular nature of the boards offer "cleaner" stage/FOH sound for live applications, and the ability to produce great drums sounds faster in the studio.
- Boards assemble quickly via strategically placed hook and loop fasteners.
- Portable and easily transportable.
- Discrete 1" profile and clean black surface offer a distinguishing focal point for drums.



Auralex ISO-Puck

## Applications:

- Drum sets, percussion.
- Great for recording studios, working drummers, practice room isolation, Houses of Worship, and live sound production.

## Models and Dimensions: (Height: 1" overall)

- **HD-64gig:** (6) HD-22 (23.75" x 23.75" x 1") and (1) HD-tc (23.75" x 31.75" x 1")
- **HD-88concert:** (12) HD-tc (23.75" x 31.75" x 1")

## HoverDeck Components:

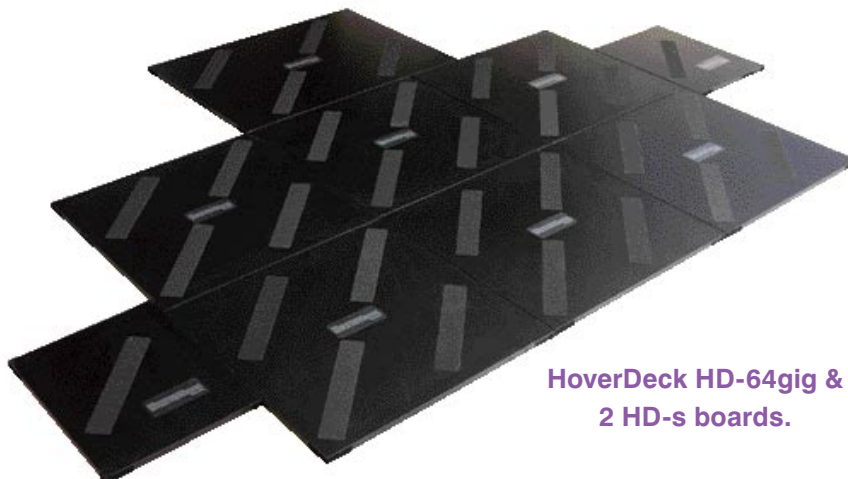
- **HD-22:** (23.75" x 23.75" x 1")
- **HD-tc:** (23.75" x 31.75" x 1")
- **HD-s:** (13.5" x 17.5" x 1")

## Installation:

- Assemble on hard flooring or thin carpet.
- Additional plywood flooring is suggested for best results on top of carpet/pad.

## Accessory Products:

- Additional HoverDeck HD-22 boards.
- Additional HoverDeck HD-s boards
- HoverDeck rugged road case.
- MAX-Wall Mobile Acoustical Environment.
- AuralXpanders.



HoverDeck HD-64gig & 2 HD-s boards.

## Note:

- HoverDeck is intended for rubber stops, not spikes.
- A drum carpet should be placed on the HoverDeck surface.
- HoverDeck should not be exposed to excessive periods of direct, intense sunlight.
- The boards may be cleaned with a combination of a clean, soft cloth and rubbing alcohol.